

# Donor Profile Report

The Donor Profile Report can be created for a specific donor or a group of donors using a Quality or Membership value.

It is a supportive report which is useful when speaking with a donor or attending a donor meeting.

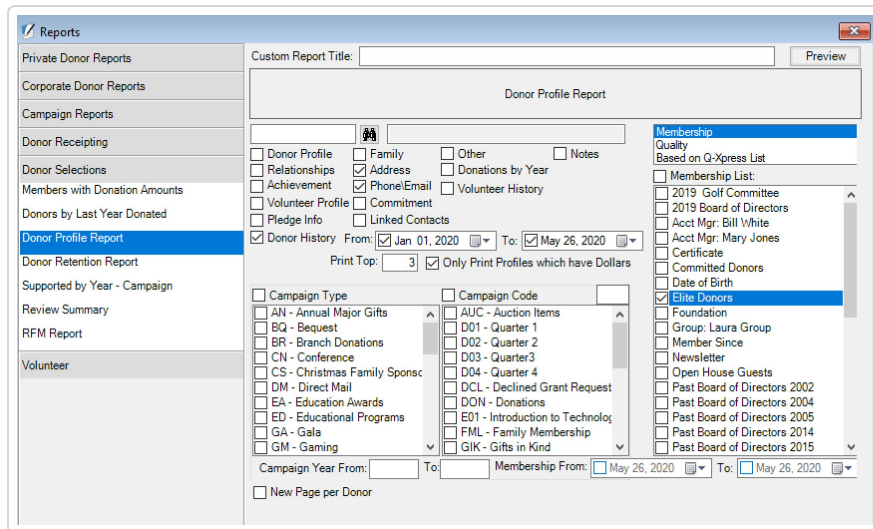
When profile data and other features in @EASE are well-populated, this report is very beneficial to development officers and management staff.

***Don't forget to add a Title!***

There is a **NEW FEATURE** found on Versions 2020.05+. This feature enables staff to create profiles for donors or donor groups using Quality or Memberships, where only those who have given donations in a given date range will be included.

Please note Donor History is checked and a From and To date is given. The Only Print Profiles which have Dollars is checked!

This provides a more focused report!



## Donor Profile Report



*Last updated on February 21, 2022*

© Batsch Group Inc 2023. Powered by Help Scout ([https://www.helpscout.com/knowledge-base/?utm\\_source=docs&utm\\_medium=footerlink&utm\\_campaign=Docs+Branding](https://www.helpscout.com/knowledge-base/?utm_source=docs&utm_medium=footerlink&utm_campaign=Docs+Branding))